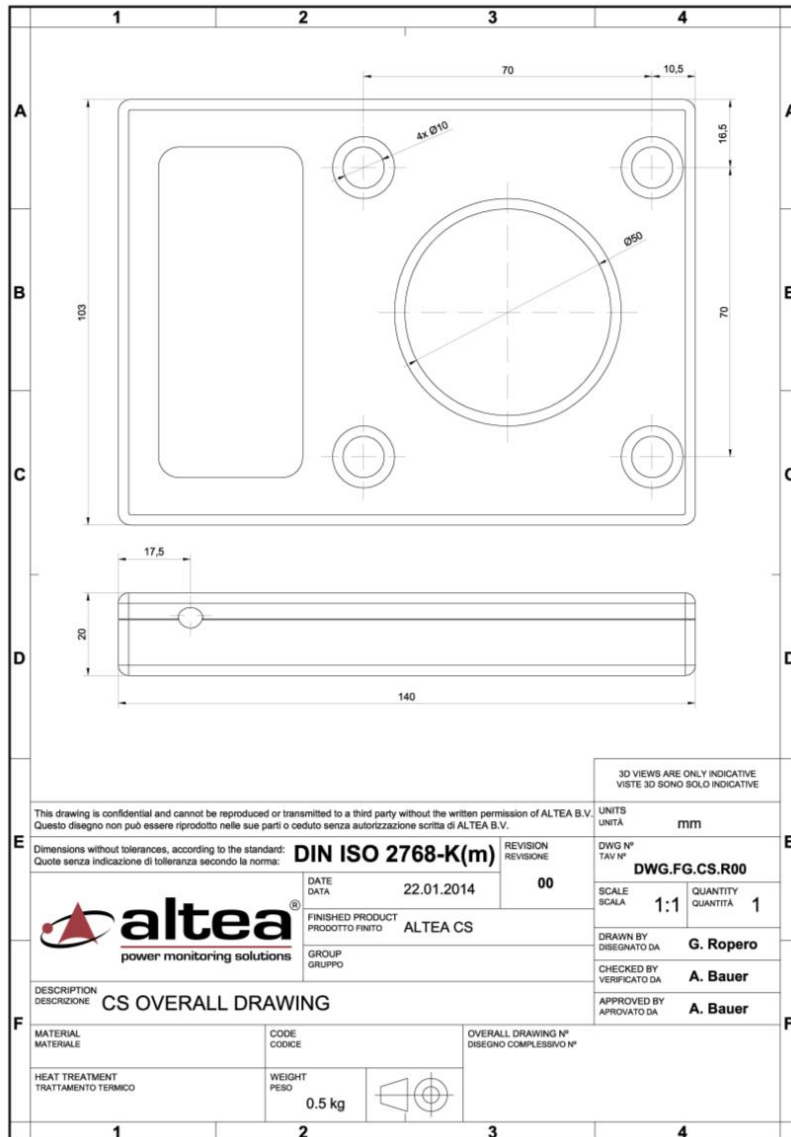




CS-50-I

**INDOOR CURRENT SENSOR**


The **CS-50-I** is an electronic current transformer for Indoors use. The sensor is a Rogowski coil completed by an active circuit for the signal integrator. Altea CS is suitable for Iv applications or for being mounted on the insulated portion of MV cables.  
CS-50-I main electrical characteristics are listed in the table below, where \* marks parameters customizable upon request.

Rated insulation level	0,72 / 3 / - kV
Accuracy class *	For protection 5P40 For measurements 0.2 or 0.5
Rated primary Current, $I_{pr}$ *	630 A
Rated secondary voltage, $U_{sr}$ *	0,2 V
Nominal frequency	50/60 Hz
Nominal transformation ratio, $K_n$	630 A / 0,2 V
Rated Continuous thermal Current, $I_{cth}$	2400 A
Rated Short-time thermal Current, $I_{th}$	31,5 kA / 3s
Dynamic Nominal Current, $I_{dyn}$	80 kA
Rated primary time constant, $\tau_{pr}$	20 ms
Auxiliary Supply voltage	$\pm 12$ Vdc
Max. and Typ. Supply current	15 mA
Weight	0,4 kg
Applicable Standards	IEC 60044-8
Accuracy on harmonics	according to IEC 60044-8
Bandwidth (-3 dB)	30 Hz – 5 kHz



[www.alteasolutions.com](http://www.alteasolutions.com)

Altea B.V. · Claude Debussylaan 18 · 1082 MD Amsterdam · The Netherlands

Phone: +31 20 625 6115 · Email: [info@alteasolutions.com](mailto:info@alteasolutions.com)